

The Future of Transit Service Enhancement Plans Update



Presentation to the TriMet Board of Directors
May 27, 2015

www.trimet.org/future

The Future of Transit Service Enhancement Plans



Schedule

Westside:	Plan Completed
Southwest:	Completion in Summer
Eastside:	Completion in 2015
Southeast:	Completion in 2015
North/Central:	Completion in 2015

SEP Visions Become the Template

Annual Service Plan

Maintain

Capacity &
Reliability

Schedule & detail
tweaks

Optimize & Restore

Restore Frequent
Service Levels

Optimize routes
& schedules

Increase

Increase spans &
frequencies

Add new lines

Reconfigure lines

Where We Are In The Process

Public Outreach & Research
Existing Plans

Collect & Map Data

Future Growth

Determine & Share Common Themes

Draft Transit Service Vision & Partnership Opportunities

Gather Feedback

Eastside &
North/Central SEPs

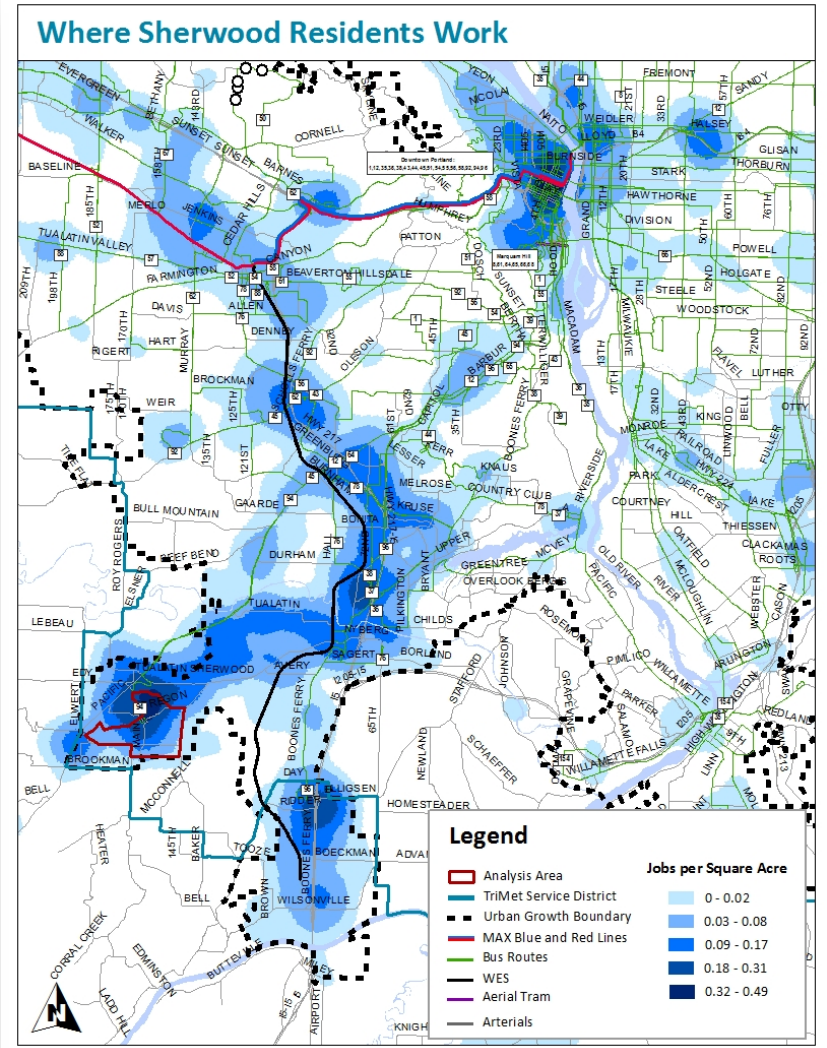
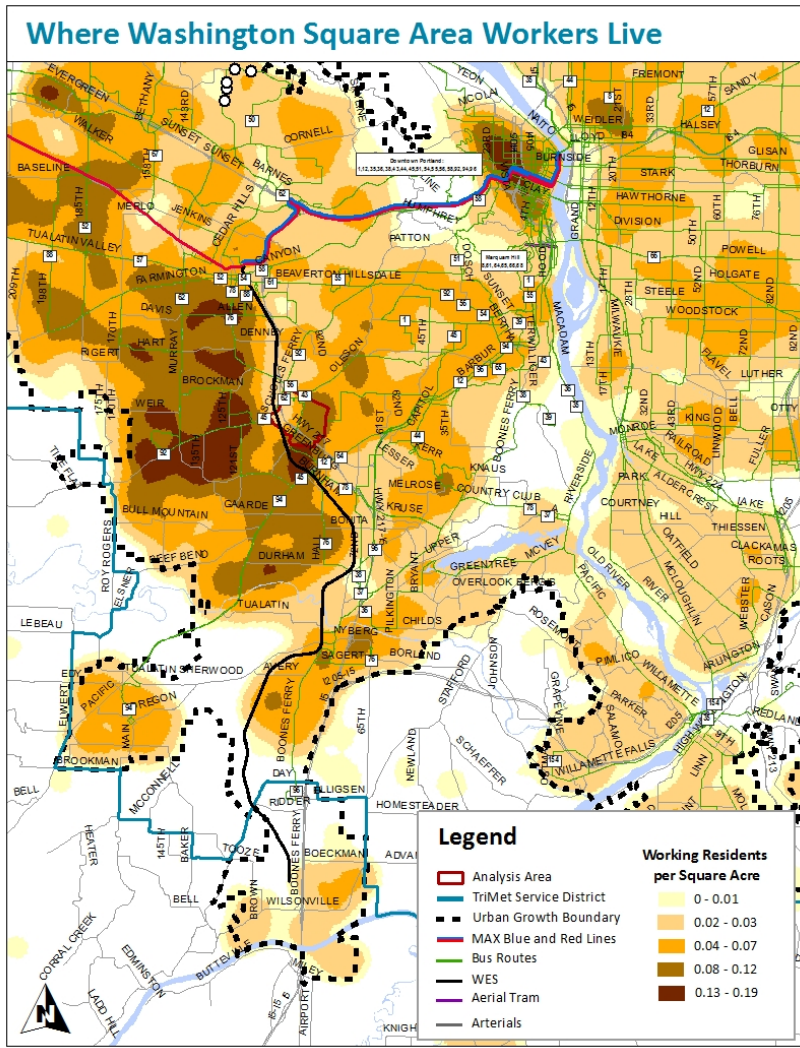
Southeast SEP

Refine & Finalize Transit Service Vision

Southwest SEP

Westside SEP
[completed vision]

Where People Live & Work

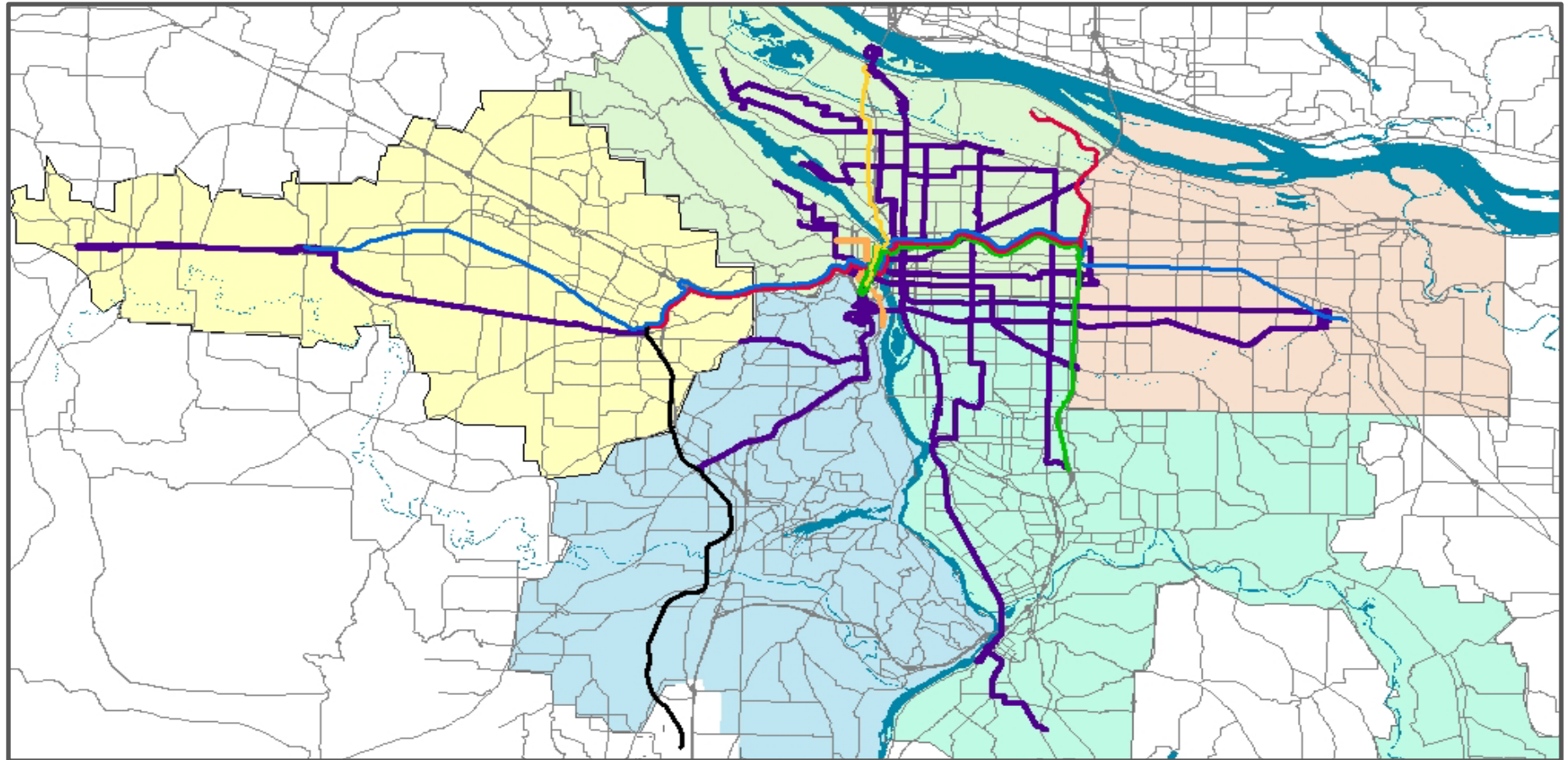


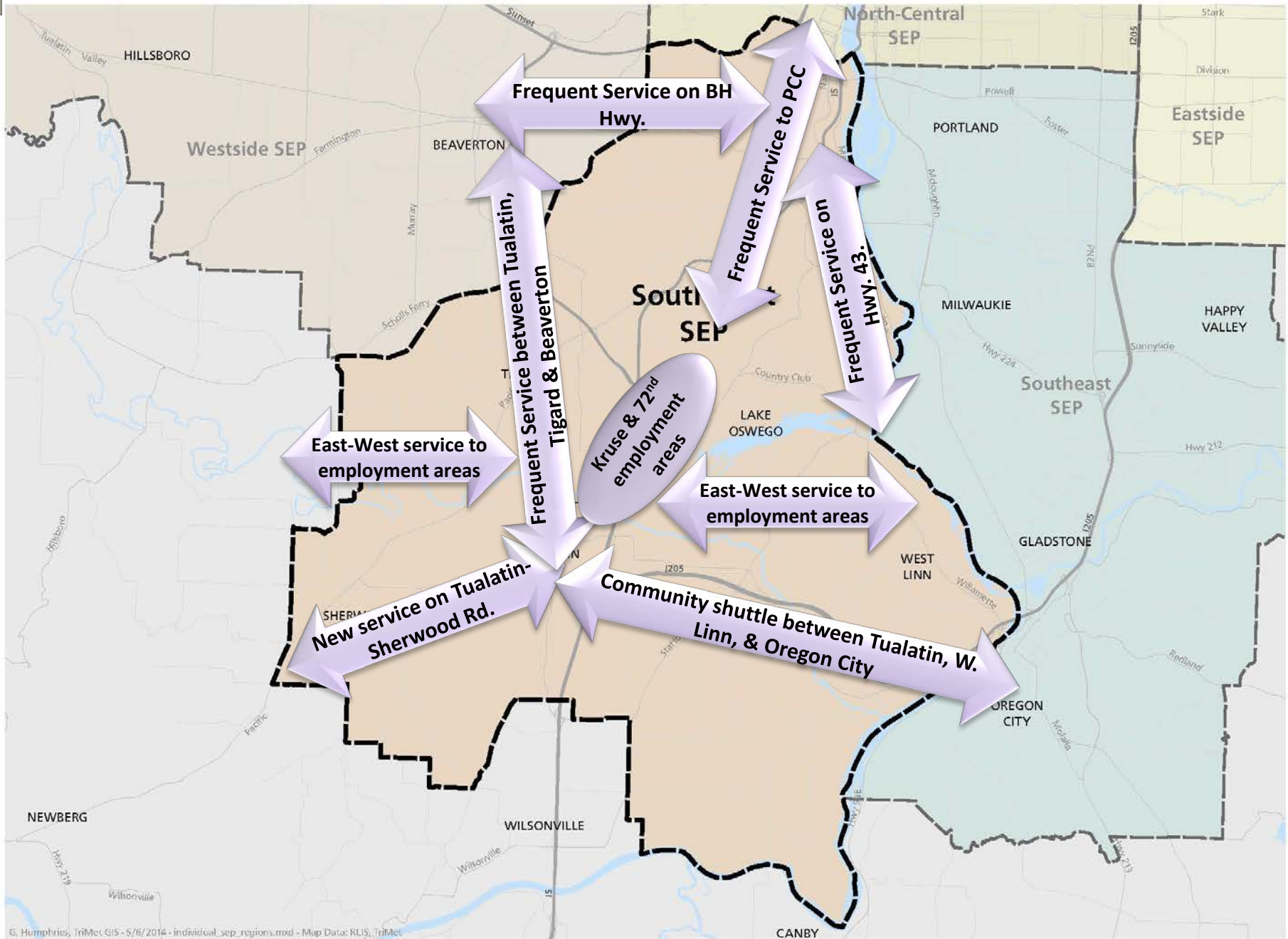
Community Outreach



- Community meetings
- Surveys
- Onboard & transit center outreach
- Focus groups
- Outreach to communities of concern
 - Limited English
 - Low income
 - Minority
 - Youth
 - Seniors

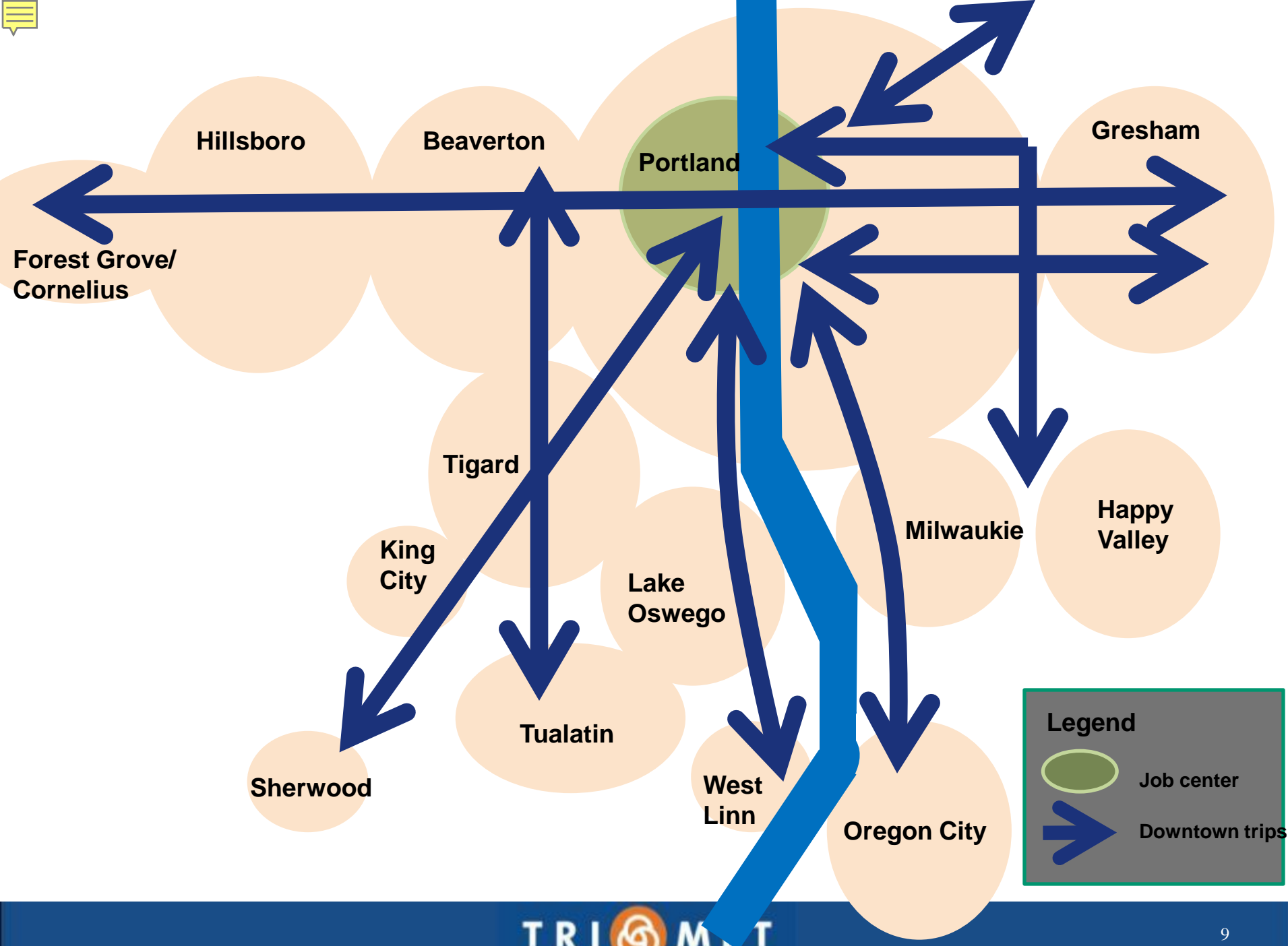
Frequent Service Restoration

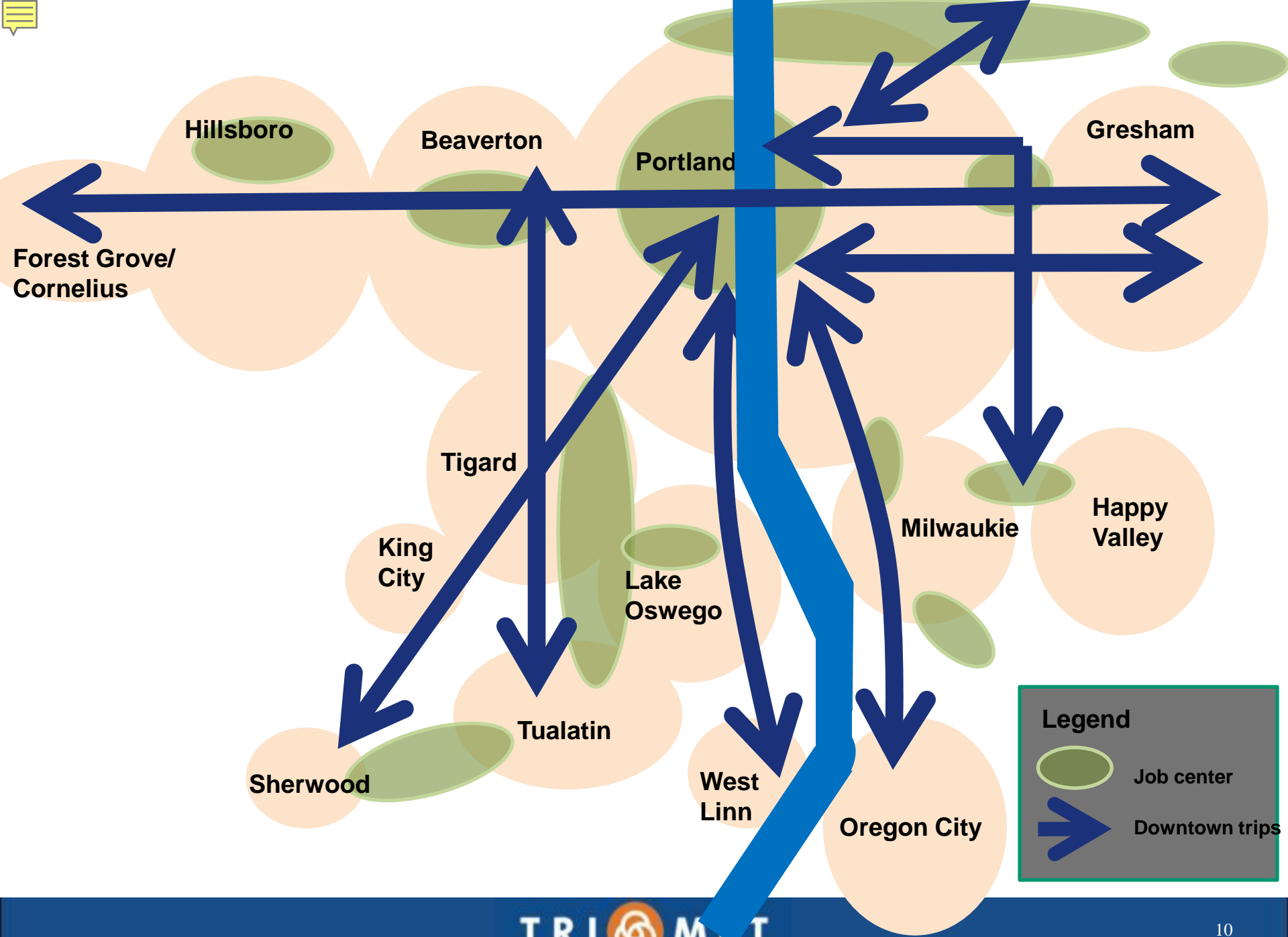


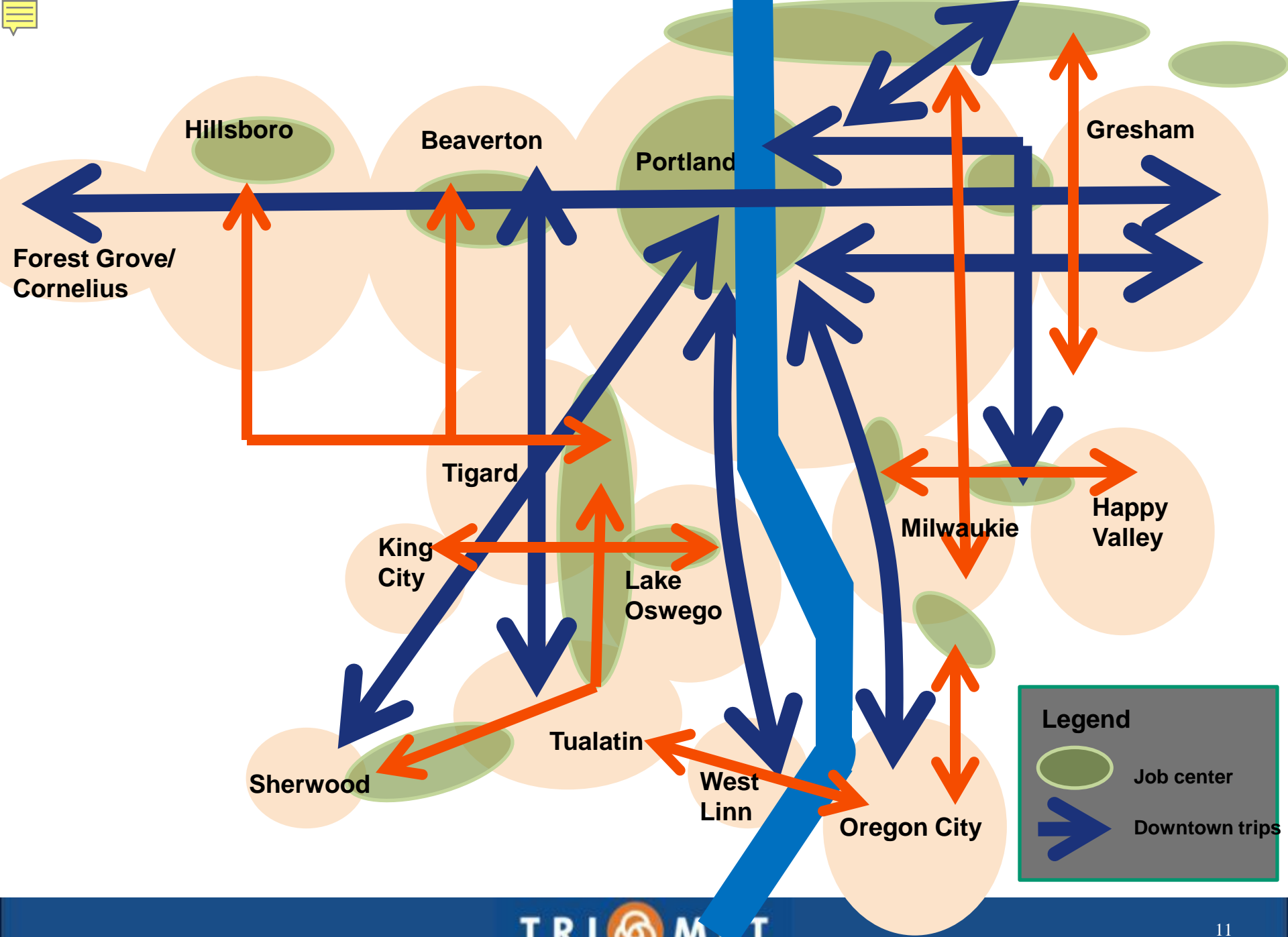


Southwest TriMet Service Enhancement Plan (SEP) Area

G. Humphries, TriMet GIS - 5/6/2014 - individual_sep_regions.mxd - Map Data: RLIS, TriMet

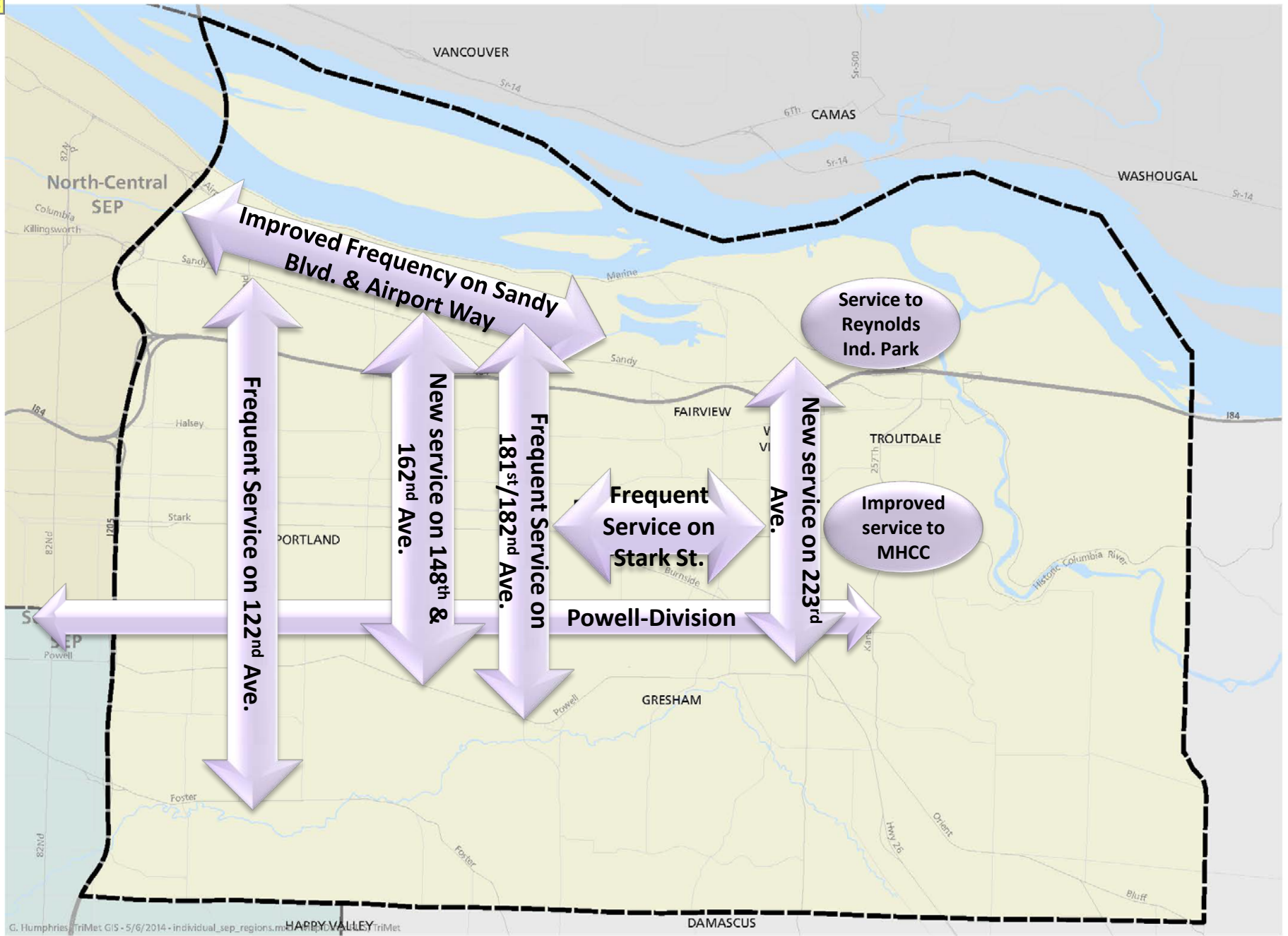




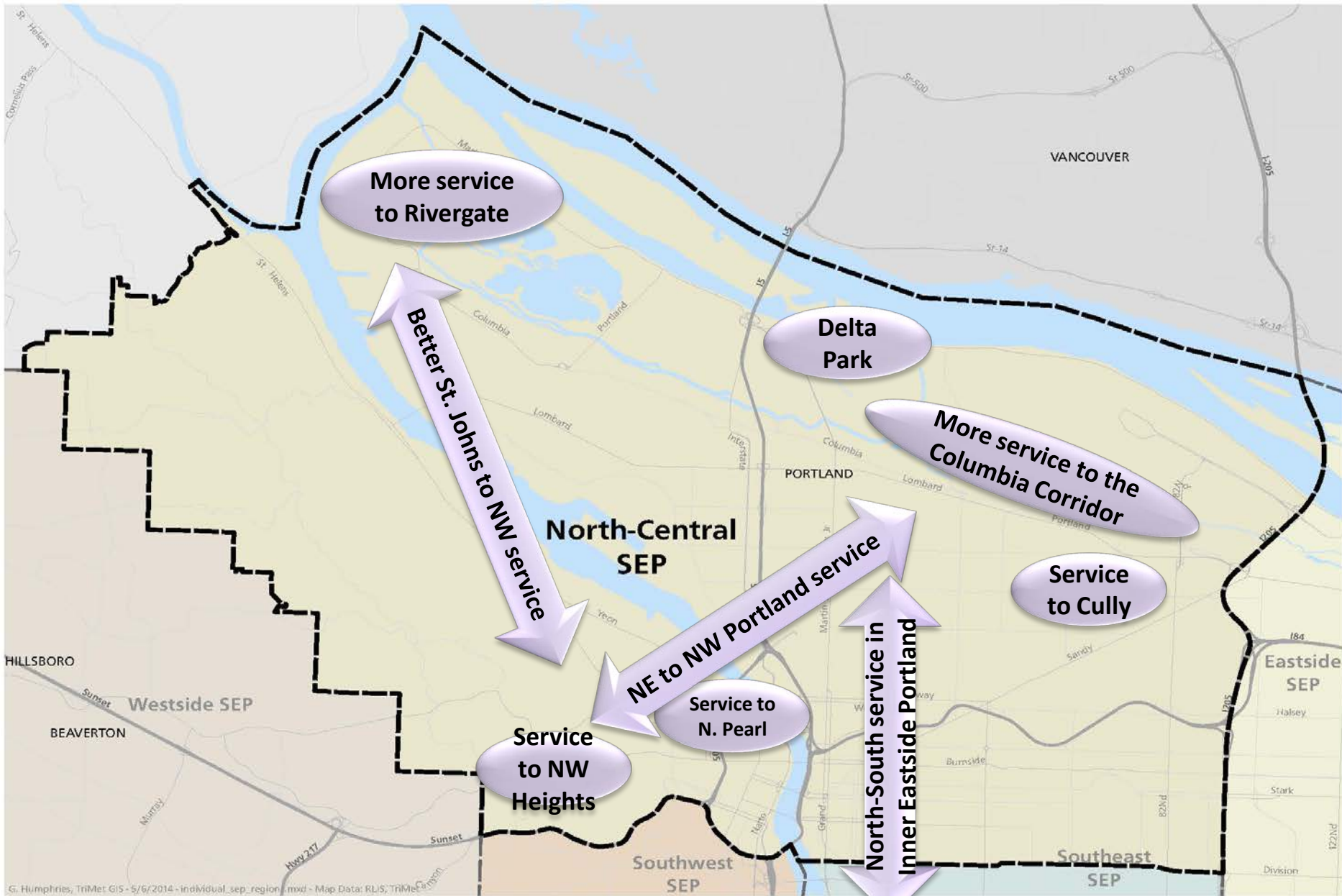


Legend

-  Job center
-  Downtown trips

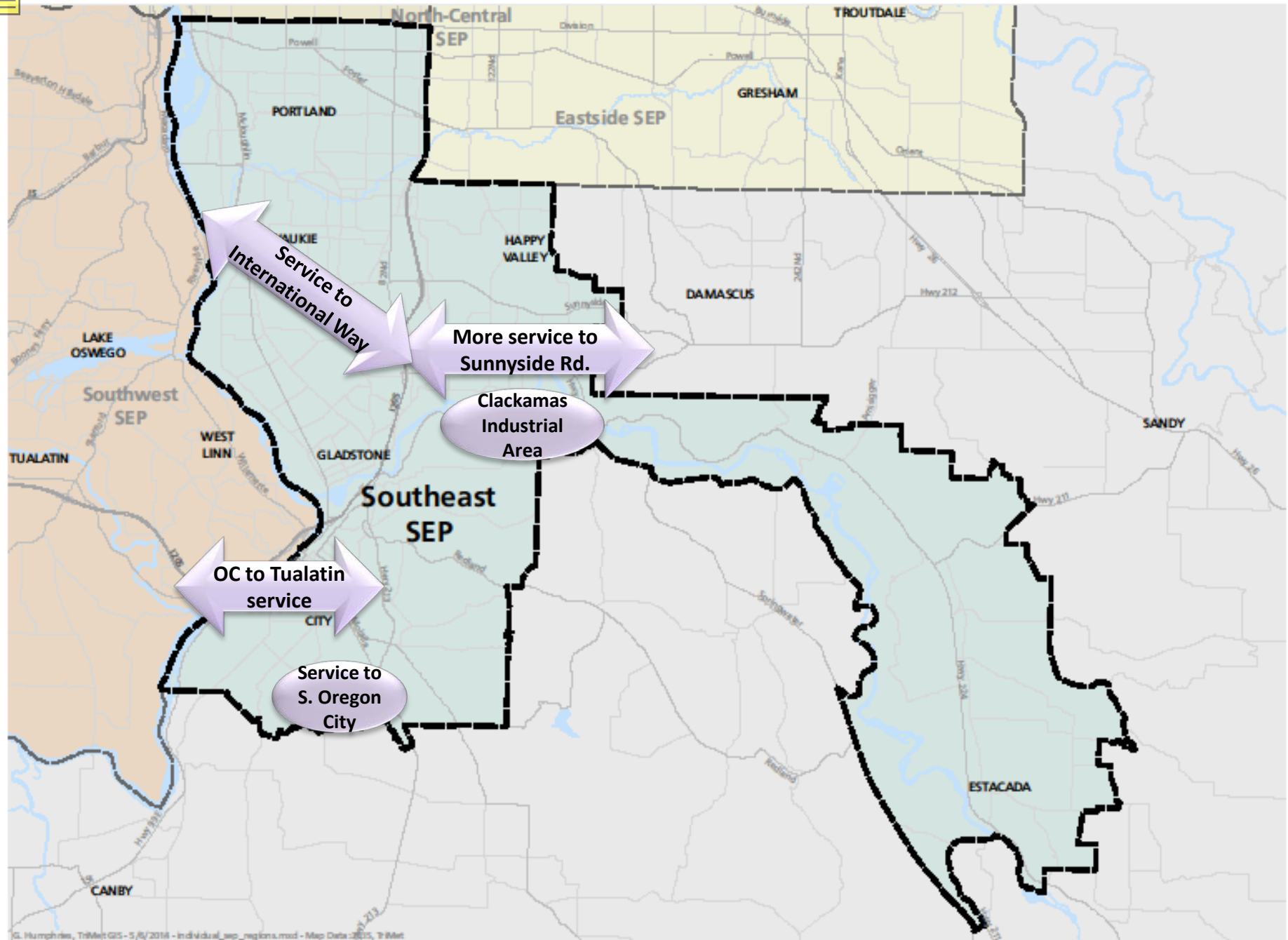


Eastside TriMet Service Enhancement Plan (SEP) Area



North-Central TriMet Service Enhancement Plan (SEP) Area





Southeast TriMet Service Enhancement Plan (SEP) Area

© G. Humphries, TriMet GIS - 5/6/2014 - individual_sep_regions.mxd - Map Data: © 2013, TriMet

Implementing the Visions

Completed Improvements

- Frequent Service levels restored weekdays and Saturdays already (*Less Waiting/Faster Trips*)
- Line 47-Baseline/Evergreen realigned to connect employment, neighborhoods, Orenco & PCC (*Better Connections*)
- Increase frequency on Lines 47-Baseline/Evergreen (boardings up over 35%) & Line 48-Cornell (boardings up 19%) (*Less Waiting/Faster Trips*)
- More Line 9-Powell trips to Gresham (*Less Waiting/Faster Trips*)
- Capacity & reliability Improvements to Lines 4, 6, 8, 9, 10, 12, 15, 20, 21, 33, 36, 37, 44, 47, 62, 76, 78, 94, and 99 (*Less Waiting/Faster Trips*)
- Partnerships for sidewalks and crossings (*Safe Places to Walk & Wait*)
- Orenco Station Bike & Ride (*Bridge the Last Mile*)
- Forest Grove Shuttle (*Community Transit*)
- Newer Buses throughout the region

Coming Soon

- Orange Line improvements extend bus service to many neighborhoods in Clackamas County, Milwaukie, Oregon City (*Better Connections*)



- The Future of Transit is a Portland Metro region interconnected by bus and rail service
- Will require additional funding in the long-term



www.trimet.org/future